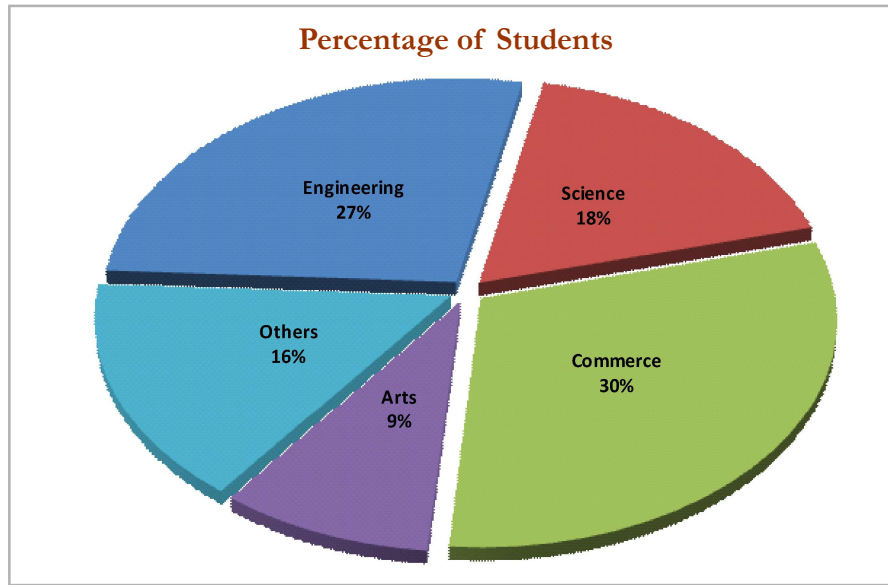


Percentage of Students Admitted in the Participating B-Schools from Different Streams of Education in 2011

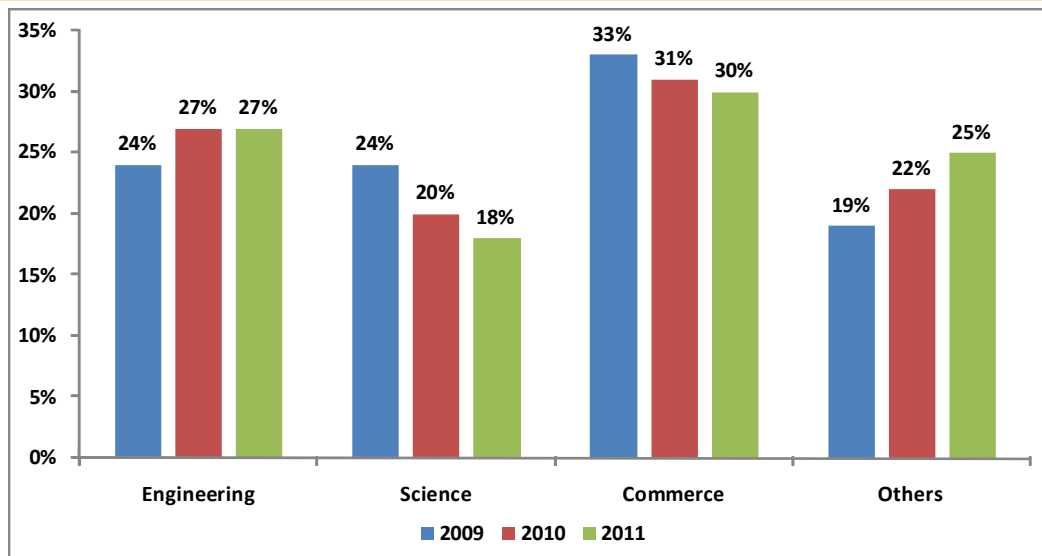


* Data as provided by the Institutes

Comparison of Last Three Years' Percentage of Students Admitted with Different Streams

The background analysis reflects a trend of students from different disciplines seeking or aspiring to go for Management programme after graduation. The table below shows the overall pictures of participating B-Schools in India.

	Engineering	Science	Commerce	Others
Percentage of Students Admitted with Different Streams 2009	24%	24%	33%	19%
Percentage of Students Admitted with Different Streams 2010	27%	20%	31%	22%
Percentage of Students Admitted with Different Streams 2011	27%	18%	30%	25%



* Data as provided by the Institutes